

How to view and analyse statistics of containment

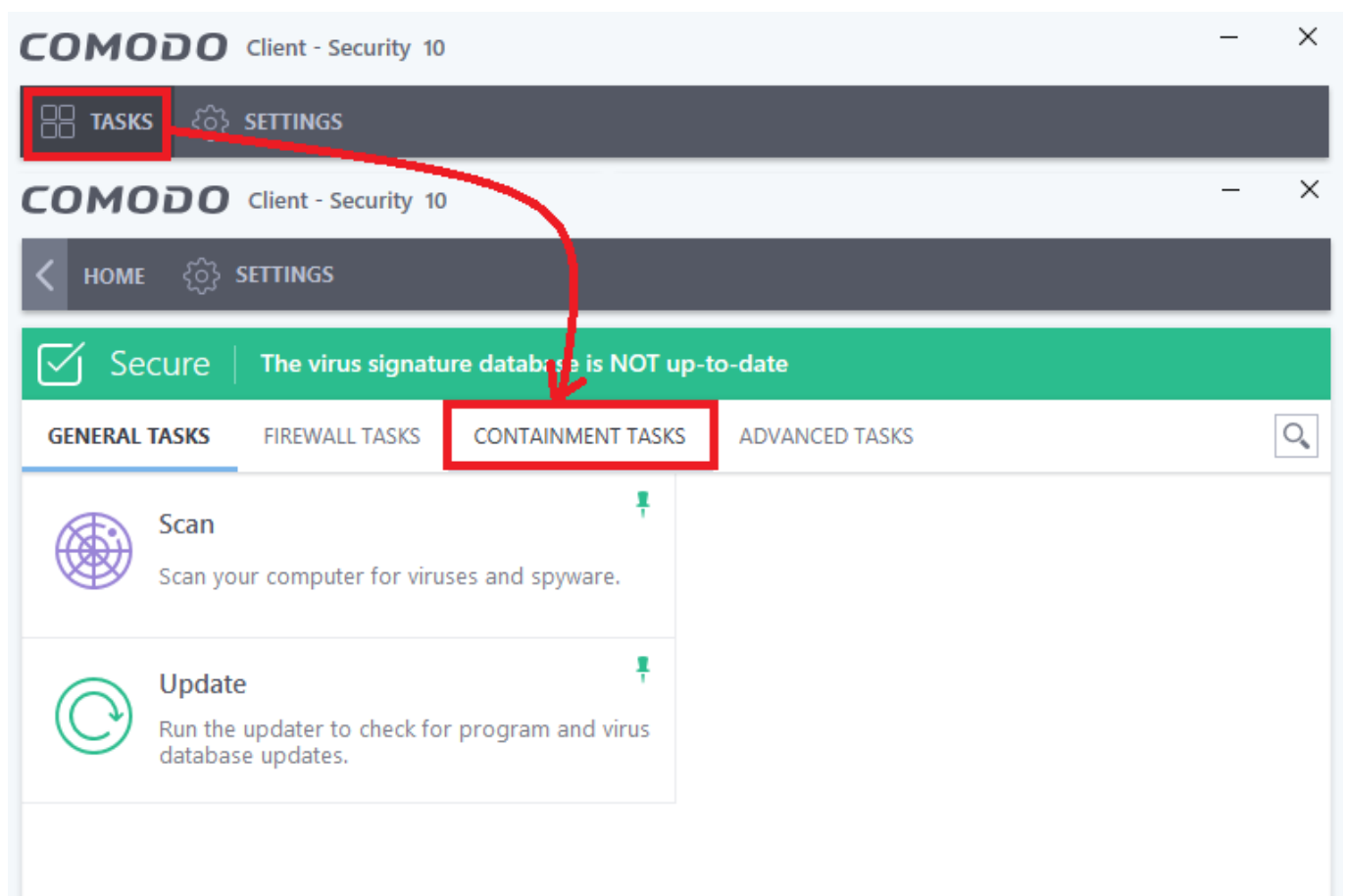
We have a brand new feature for Containment From now on, you will be able to view statistics of containment components for each process. By this way, you can analyze how containment protects you with statistics on Registry, COM, IMA etc. both in containment and real-time.

Note: This new feature under containment task is available only for Comodo client security version-10.2.0.6537 and above

To install Comodo Client Security(CCS) in endpoint, please refer this wiki topic: <https://wiki.itarian.com/frontend/web/topic/how-to-install-comodo-client-security-on-windows-linux-and-mac-devices>

To Update Comodo Client Security(CCS) in endpoint, please refer this wiki topic: <https://wiki.comodo.com/frontend/web/topic/how-to-manually-run-updates-on-endpoints>

Step 1: Open Comodo Client security application from the endpoint in which it is installed. Select Tasks-> Containment Task



Step 2: Select the new feature Containment Statistics Analyser then a new window will be opened for installing the feature. In the new window click “Agree and install”.

 **Secure** | The virus signature database is NOT up-to-date

GENERAL TASKS FIREWALL TASKS **CONTAINMENT TASKS** ADVANCED TASKS 



Run Virtual

Run applications in the container and create shortcuts for them on the desktop.



Open Shared Space

Open the storage space shared between virtual and real applications.



Reset the Container

Clean container data by erasing all its content.



Watch Activity

Open COMODO KillSwitch to monitor advanced process and system activity.



View Active Processes


View the details of the processes active on this computer.



Containment Statistics Analyzer

View analysis of Containment events and protection statistics of the component.



 SILENT MODE



Install Required Packages

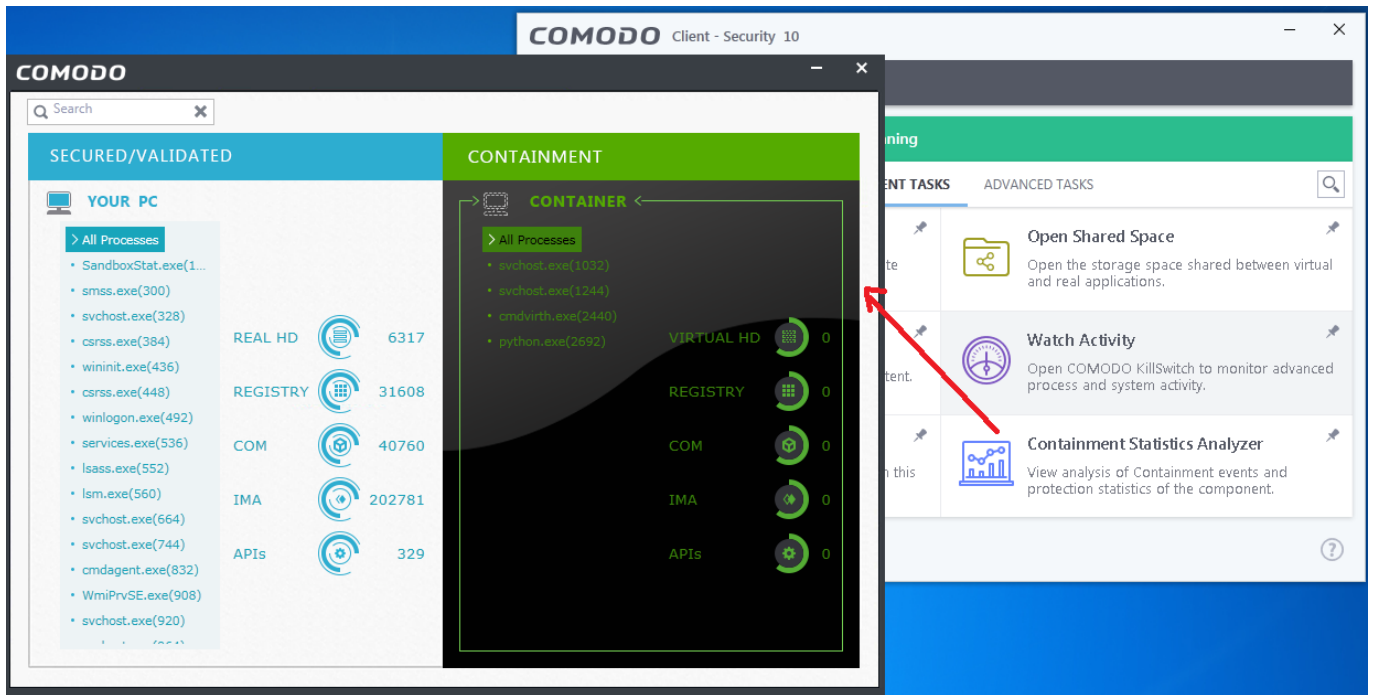
The feature requires installation of additional packages.

Package Name	License Agreement	Size
Containment Stats Analyzer		0 MB

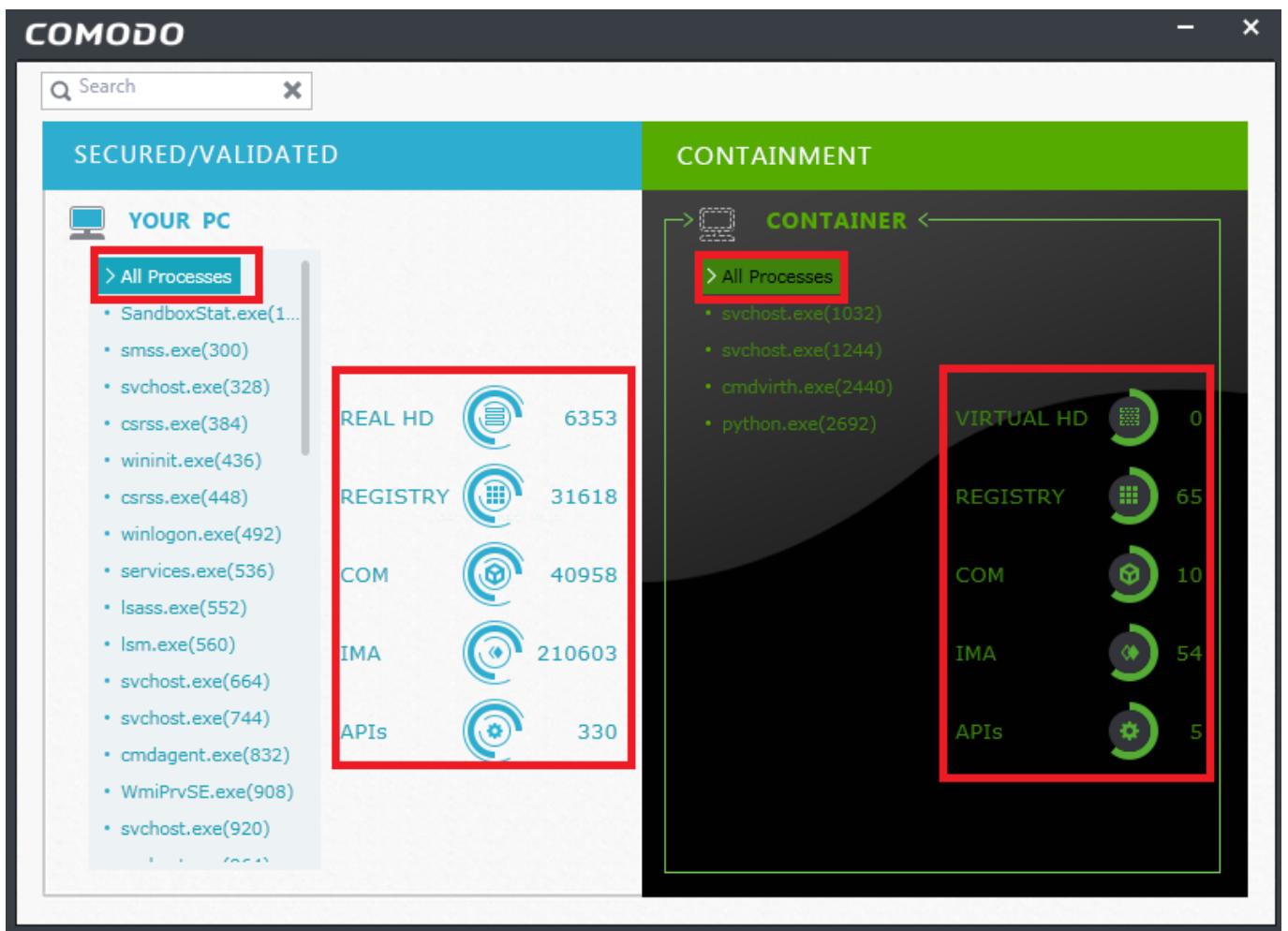
By pressing "Agree and Install", you agree with user license agreements for all the packages listed above.

AGREE AND INSTALL

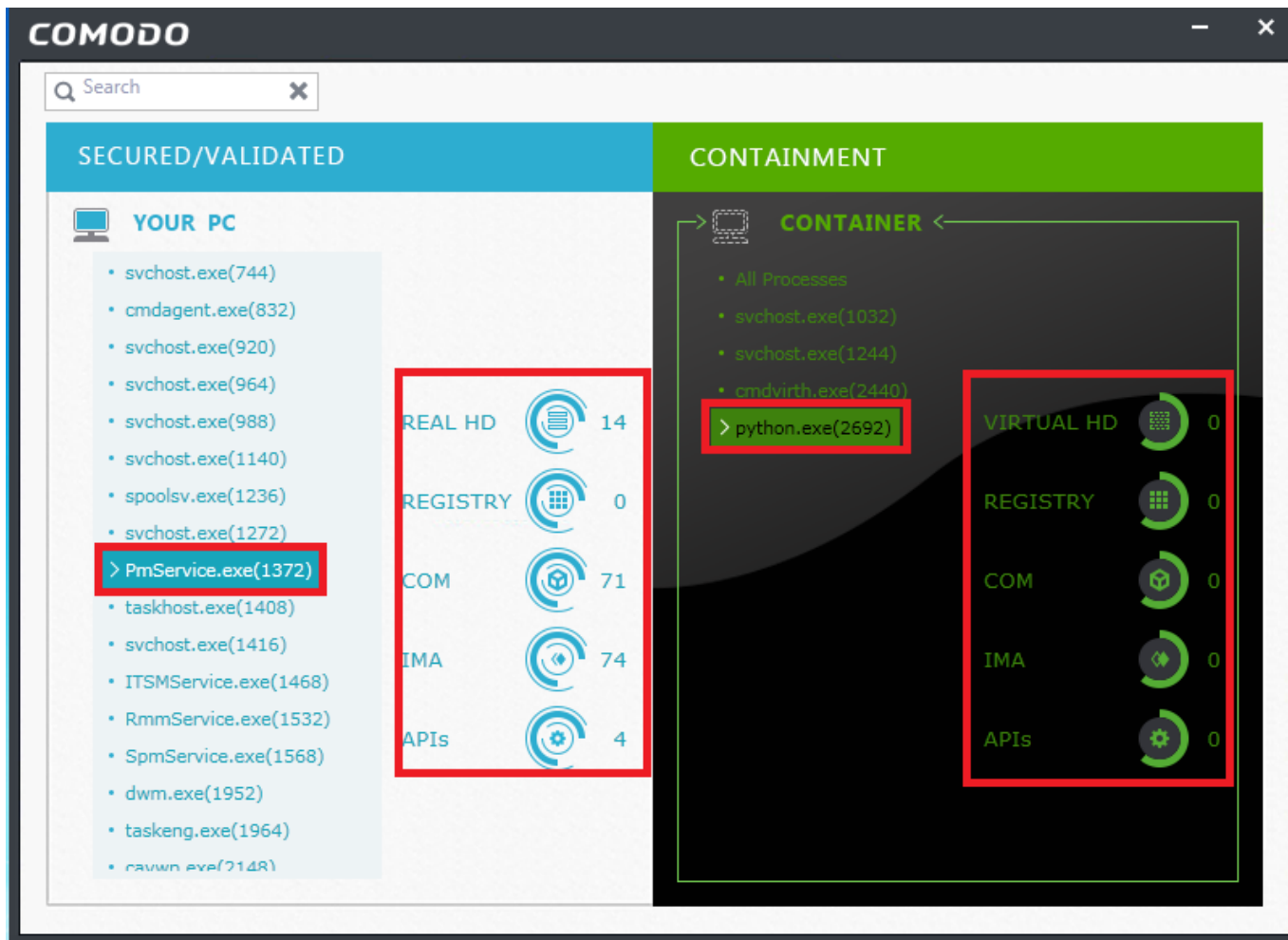
Step 3: The containment analysis windows consists of two major section **Secured/validated** and **Containment**.



i) The process statistics details can be obtained together for all processes running in the system.



ii) If the statistics details are needed for any single process means it can also be obtained by selecting that particular process from the list.



Secured/validated: This section displays the list of executables which are considered as trusted process/executables. These executables have full access permission to get executed in the PC. The statistics available for this section are:

Real HD: Total memory space occupied by the process in the physical hard disk is shown.

Registry: Total number of modification made in the registry by the process are shown.

COM: Shows total number of services accessed which are provided by other processes.

IMA: Number of the directly accessed process are shown.

APIs: Number of sensitive Application programming interfaces(APIs) accessed by the process is shown.

Containment: This section displays the list of executables and process which are allowed to run in the separate virtual space (i.e.) container. These executables have limited access permission for execution. The statistics available for this section are:

Virtual HD: Total memory space occupied by the process in the shared space or virtual provided for containment.

Registry: Total number of modification made in the registry by the contained process is shown.

COM: Shows total number of services accessed which are provided by other processes.

IMA: Number of the directly accessed process are shown.

APIs: Number of sensitive Application programming interfaces(APIs) accessed by the contained process are shown.